

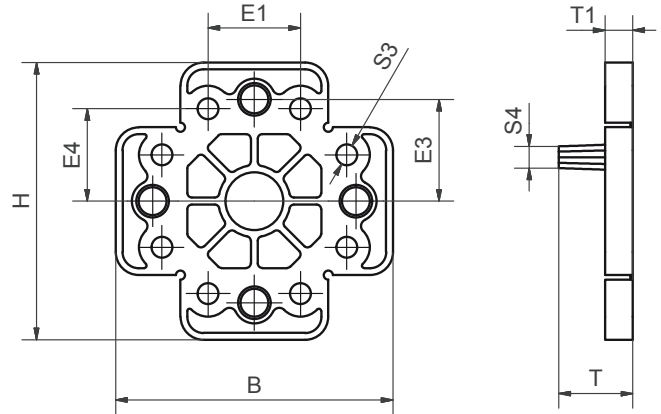
Adapter plate



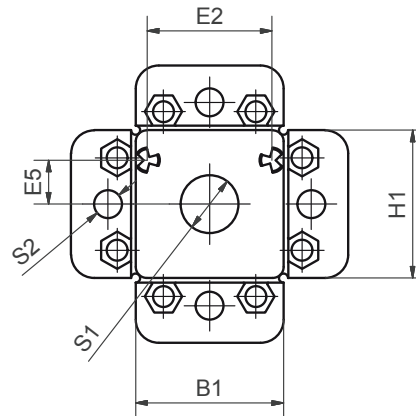
Order key

STZ-104001

- Adapter plate for manual orientation of position indicators and hand clamps
- Suitable for drylin® linear modules of SLW/SHT/SHTP series (see table)
- Material: plastic



Installation note: Not used sections can be easily separated

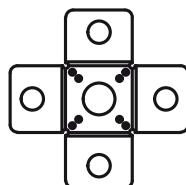


Order number	suitable for
STZ063001	SLW-0630/SHTP-06
STZ104001	SLW-1040/SHT-12 SHT-20, SHTP-01/02-12
STZ166001	SLW-1660
STZ208001	SLW-2080
STZ302403	SHT-30

Dimensions [mm]

Order number	H	B	B1	T	T1	E1	E2	E3	E4	E5	S1	S2	S3	S4
STZ063001	48	48	18	8	5	-	14.4/11*	18	-	7.2/5.5	8.5	6	-	ø1.5
STZ104001	60	60	32	16	6	20	27	22	20	9.5	12.5	6	4.5	M6
STZ166001	60	71	32	20	6	20	58	22	20	4.5	14.5	6	4.5	ø11
STZ208001	60	71	32	16	6	20	58	22	20	13	14.5	6	4.5	M10
STZ302403	60	60	32	16	6	20	27	22	20	9.5	14.5	6	4.5	M6

* This adapter plate with 4 or 8 pins



delivery
time on request