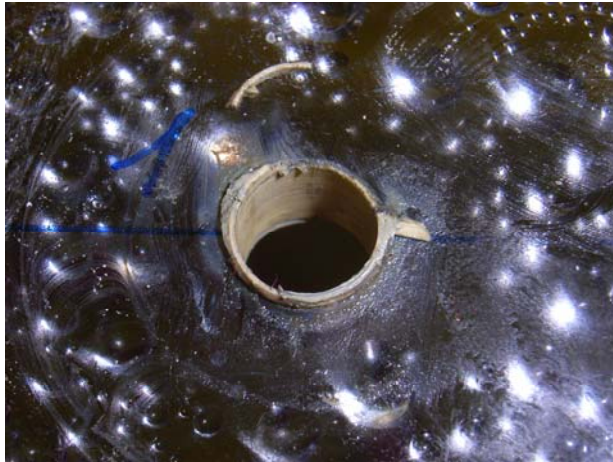
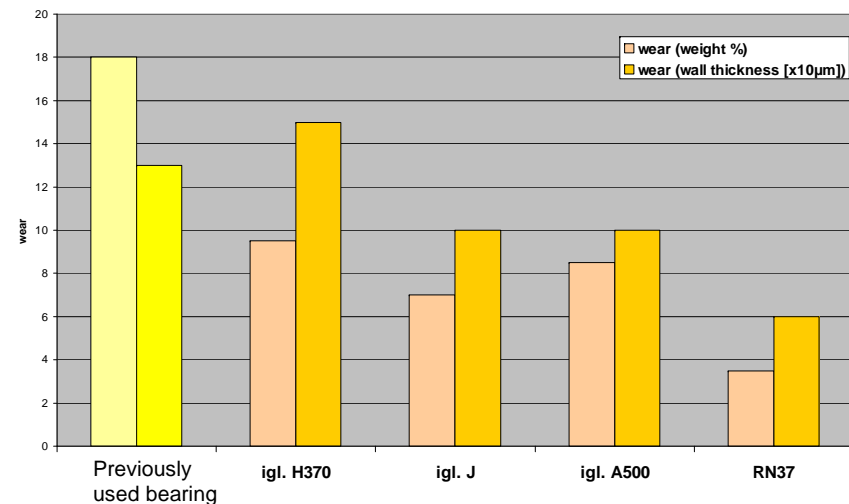


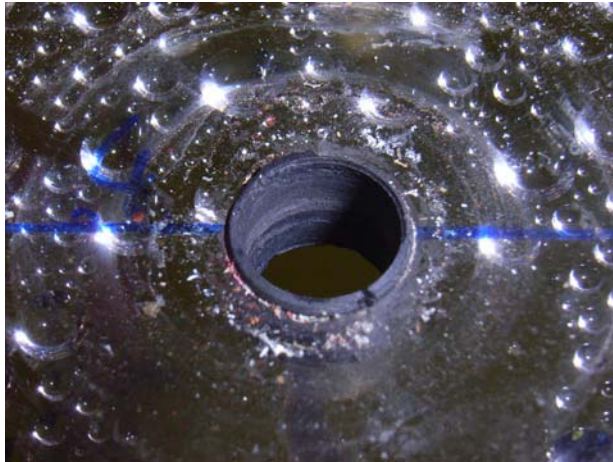
Previously used bearing



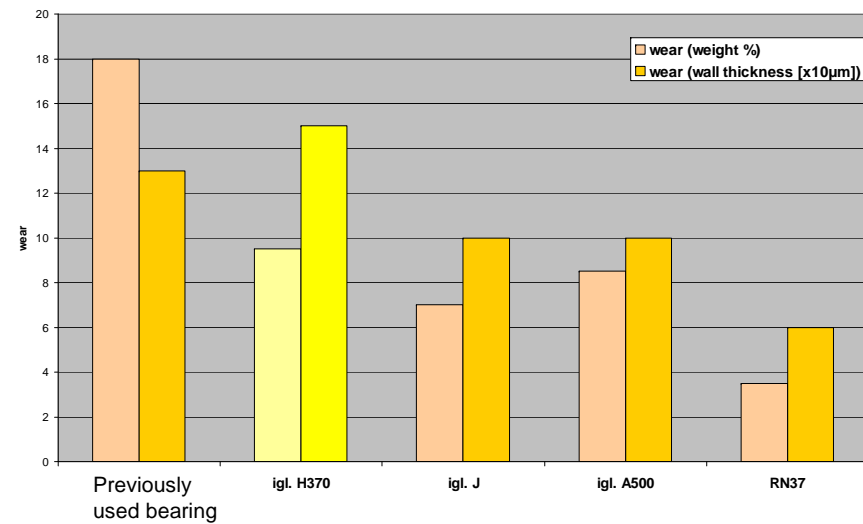
- Run also in tests at CUSTOMER
- Broken ends of the bearing where they were not press-fitted (probably chem. attack)
- Most wear of all tested bushings



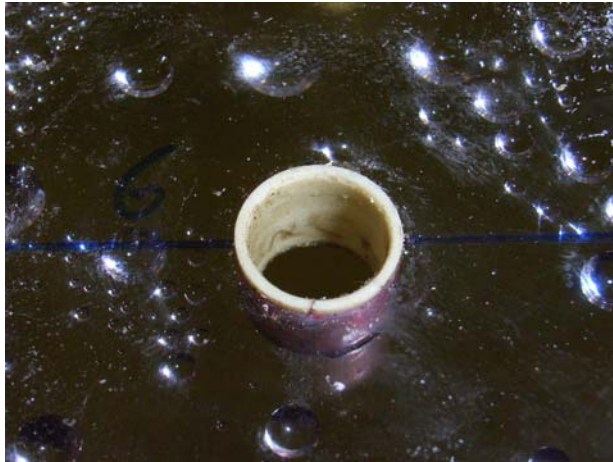
iglidur[®] H370



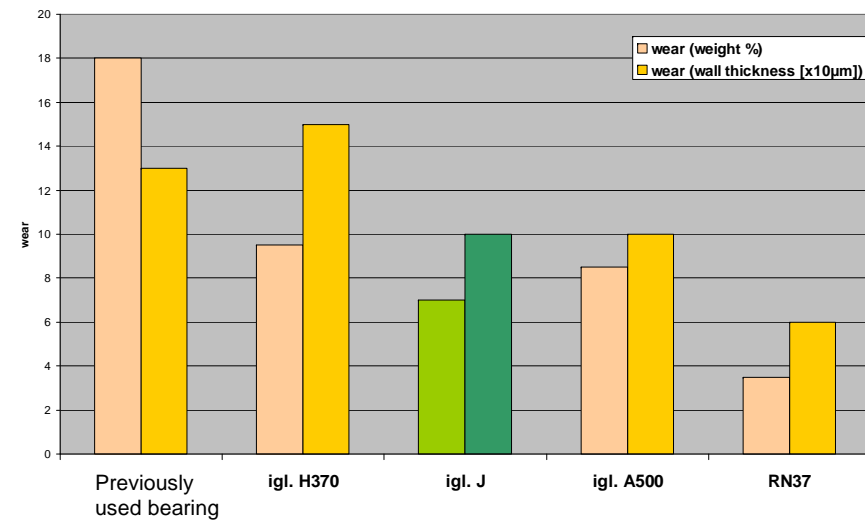
- Run also in lot of application, but against steel shafts
- More wear at the drive gears than all other bearings



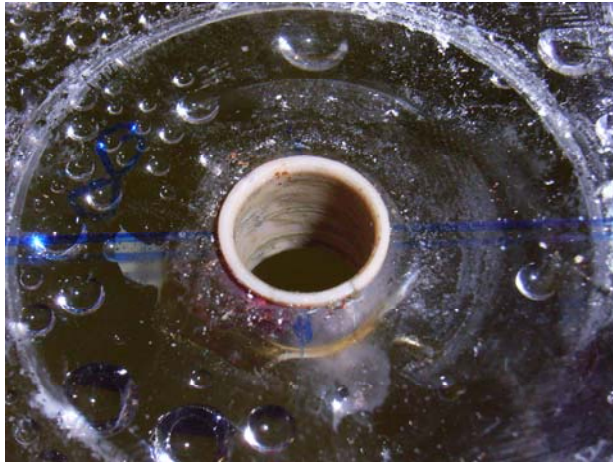
iglidur[®] J



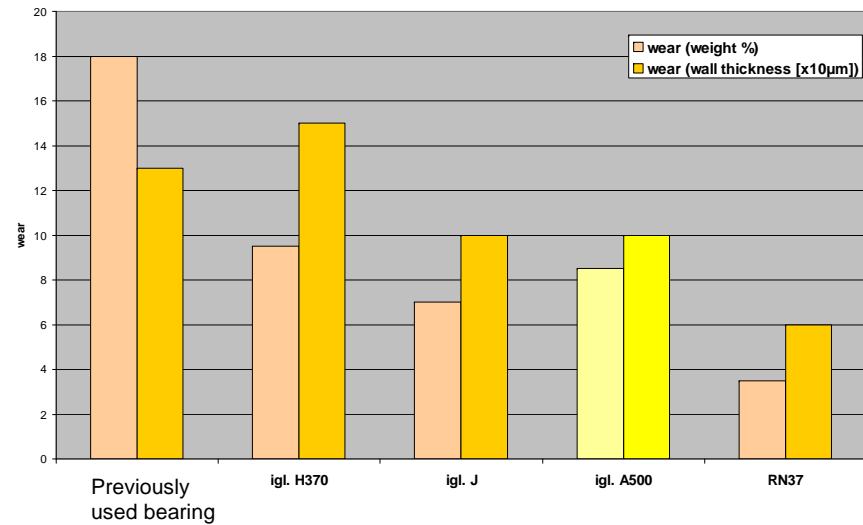
- Best price-performance-ratio recommendation



iglidur® A500



- Highest chemical resistance



iglidur® RN37



- Used as bushing for stainless steel in water pumps
- Shaft looks a little different, but no measurable wear

