



For the following  
E-Chains®/E-Tubes:

System E4 Series

- 800
- 840

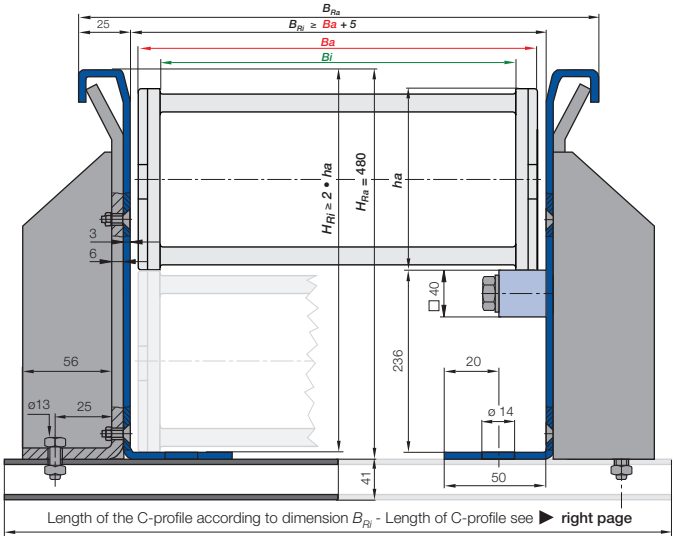
Guide troughs with reinforced brackets for the largest igus® E-Chains® Series 800 and 840. Especially designed for crane and off-shore applications



**Fixed end module**

Quick installation of the mounting brackets due to the prepared bores

▶ page 9.62



- $B_a$  = Outer E-Chain® width
- $B_i$  = Inner E-Chain® width
- $h_a$  = E-Chain® outer height
- $H_{Ri}$  = Inner trough height
- $H_{Ra}$  = Outer trough height
- $B_{Ri}$  = Inner trough width ▶ depends on dim.  $B_a$
- $B_{Ra}$  = Outer trough width
- $n_{Mon}$  = Number of installation sets (left/right)
- $n_{Ri}$  = Number of trough sets (left/right)
- ▶  $H_{Ri} \geq 2 \cdot h_a$
- ▶  $B_{Ri} \geq B_a + 5$
- = Guide trough
- = Glide bar
- = Installation set
- = C-profile

**Steel Guide Trough components - Sets and single parts**

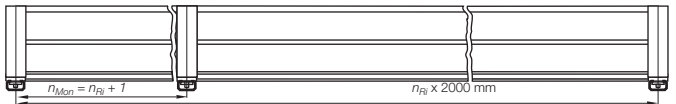
Complete guide trough sets - description	Part No.	Weight	kg
Set of 2 trough side parts <b>without</b> glide bars, 2 m section	90.30	≈ 53,40 kg	
Set of 2 trough side parts <b>with</b> glide bars, 2 m section	90.31	≈ 59,40 kg	
1 Installation set with C-profile	90.50. <input type="text"/>		
1 Installation set without C-profile	90.50	≈ 0,41 kg	
Single parts - description			
1 glide bar, individual, each 2 m	90.01	≈ 3,00 kg	
1 glide bar, individual, each 2 m + 11 screw sets	90.20	≈ 3,50 kg	
11 screw sets for 2 m sections	90.21	≈ 0,50 kg	
1 Clamping bracket, individual	90.51	≈ 2,75 kg	
2 Countersunk-head screws M8 x 25, individual	92.53		
2 Hexagon nuts M8, individual	92.54		
1 Hexagon-head screw M12 x 30, individual	92.55		
1 Glide nut M12, individual	92.56		
1 C-profile, individual	92.52. <input type="text"/>	≈ 0,90 kg/m	

Supplement Part No. with the indicated C-profile-length-index. Example: 90.50.

C-profile-length-index for your chosen trough inner width  $B_{Ri}$  ▶ right table

Trough side parts also available in stainless steel. Please add index "E" to the Part No. 90.30.E

**Principle sketch: Number of installation sets which have to be installed**



Calculation - travel  
center mounted

Half travel length, rounded down to full 2 m sections = X m guide trough length without glide bars + X m guide trough length with glide bars + installation sets (number of trough pieces + 1)



Order example: Length of travel 30 m - Center mounted for Series 800.20.325.0 with  $B_{Ri} = 265$

Guide trough-set of 2 trough side parts, <b>without</b> glide bars:	
16 m Guide trough = 8 x 2 m sections (without glide bars)	Part No. 90.30
Guide trough-set of 2 trough side parts, <b>with</b> assembled glide bars:	
16 m Guide trough = 8 x 2 m sections (with glide bars)	Part No. 90.31
Installation sets complete (Guide trough-sets + 1)	
17 Installation sets (with C-profile)	Part No. 90.50. <input type="text" value="450"/>

Part No. Installation set: Steel Guide Trough with C-profile (in dependance of the width)

**800**

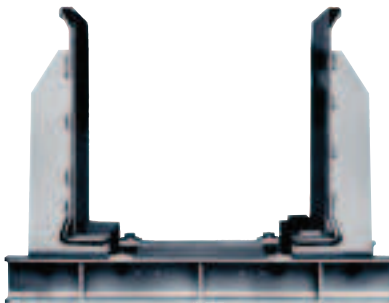
800.20.325.0

$B_{Rl}$ [mm]	Part No. Installation set
.20	265 90.50.450
.25	315 90.50.500
.30	365 90.50.550
.32	390 90.50.575
.35	415 90.50.600
.40	465 90.50.650
.45	515 90.50.700
.50	565 90.50.750
.55	615 90.50.800
.60	665 90.50.850

**840**

840.13.325.0

$B_{Rl}$ [mm]	Part No. Installation set
.13	165 90.50.350
.15	178 90.50.350
.16	190 90.50.375
.17	203 90.50.375
.18	215 90.50.400
.20	228 90.50.400
.21	240 90.50.425
.22	253 90.50.425
.23	265 90.50.450
.25	278 90.50.450
.26	290 90.50.475
.27	303 90.50.475
.28	315 90.50.500
.30	328 90.50.500
.31	340 90.50.525
.32	353 90.50.525
.33	365 90.50.550
.35	378 90.50.550
.36	390 90.50.575
.37	403 90.50.575
.38	415 90.50.600
.40	428 90.50.600
.41	440 90.50.625
.42	453 90.50.625
.43	465 90.50.650
.45	478 90.50.650
.46	490 90.50.675
.47	503 90.50.675
.48	515 90.50.700
.50	528 90.50.700
.51	540 90.50.725
.52	553 90.50.725
.53	565 90.50.750
.55	578 90.50.750
.60	628 90.50.800



Trough (Part No. 90.30 and 90.31) with reinforced mounting angles for extreme applications

! The inner width of the guide trough and the length of the C-Profile of the assembly kit can differ according to the bracket you choose. Please call us!