

For the following igus® Series

System E4

- 800
- 840

Guide troughs with reinforced brackets for the largest igus® e-chains® Series 800 and 840. Especially designed for crane and off-shore applications

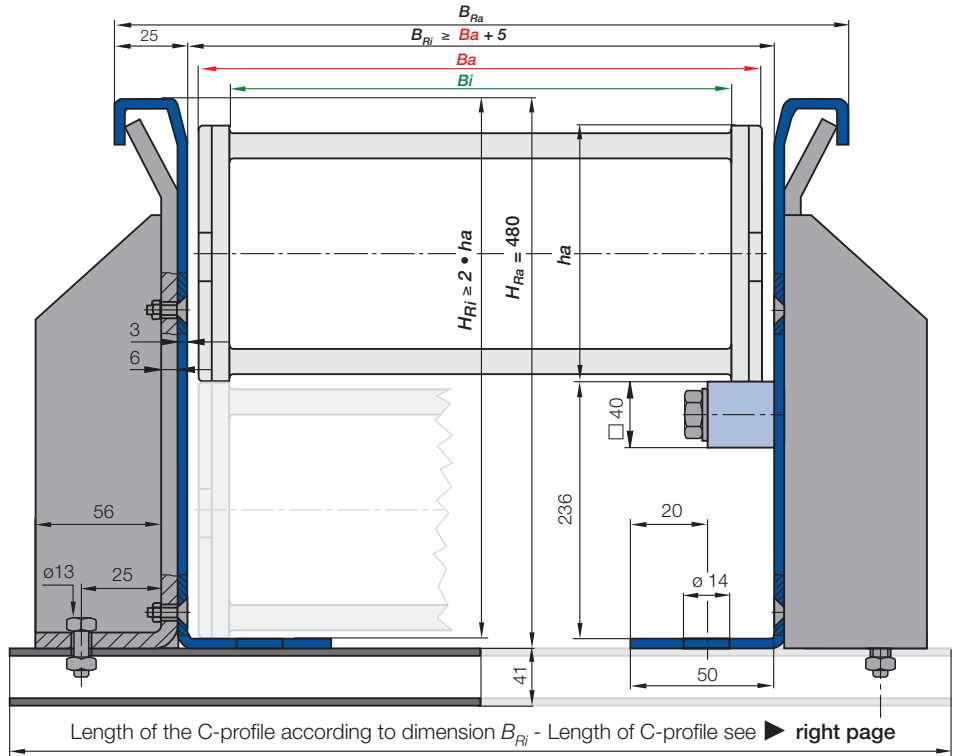


Fixed end module

Quick installation of the mounting brackets due to the prepared bores

▶ page 9.62

- B_a = Outer e-chain® width
- B_i = Inner e-chain® width
- h_a = e-chain® outer height
- H_{Ri} = Inner trough height
- H_{Ra} = Outer trough height
- B_{Ri} = Inner trough width ▶ depends on dim. B_a
- B_{Ra} = Outer trough width
- n_{Mon} = Number of installation sets (left/right)
- n_{Ri} = Number of trough sets (left/right)
- $H_{Ri} \geq 2 \cdot h_a$**
- $B_{Ri} \geq B_a + 5$**
- = Guide trough
- = Glide bar
- = Installation set
- = C-profile



Steel Guide Trough components - Sets and single parts

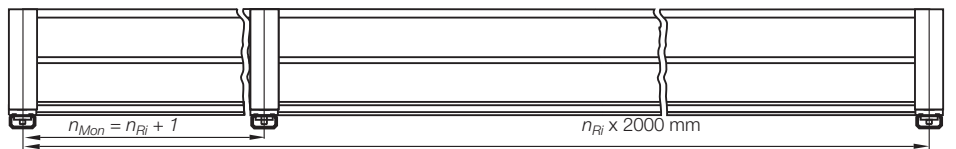
Complete guide trough sets - description	Part No.	Weight	kg
Set of 2 trough side parts without glide bars, 2 m section	90.30	≈ 53,40 kg	
Set of 2 trough side parts with glide bars, 2 m section	90.31	≈ 59,40 kg	
1 Installation set with C-profile	90.50. <input type="text"/>		
1 Installation set without C-profile	90.50	≈ 0,41 kg	
Single parts - description			
1 glide bar, individual, each 2 m	90.01	≈ 3,00 kg	
1 glide bar, individual, each 2 m + 11 screw sets	90.20	≈ 3,50 kg	
11 screw sets for 2 m sections	90.21	≈ 0,50 kg	
1 Clamping bracket, individual	90.51	≈ 2,75 kg	
2 Countersunk-head screws M8 x 25, individual	92.53		
2 Hexagon nuts M8, individual	92.54		
1 Hexagon-head screw M12 x 30, individual	92.55		
1 Glide nut M12, individual	92.56		
1 C-profile, individual	92.52. <input type="text"/>	≈ 0,90 kg/m	

Supplement Part No. with the indicated C-profile-length-index. Example: 90.50. 200

C-profile-length-index for your chosen trough inner width B_{Ri} ▶ right table

Trough side parts also available in stainless steel. Please add index "E" to the Part No. 90.30.E

Principle sketch: Number of installation sets which have to be installed



Calculation - travel center mounted

Half travel length, rounded down to full 2 m sections = **X m guide trough length without glide bars**
+ **X m guide trough length with glide bars + installation sets**
(number of trough pieces + 1)

Order example: Length of travel 30 m - Center mounted for Series 800.20.325.0 with $B_{Ri} = 265$

Guide trough-set of 2 trough side parts, without glide bars:	
16 m Guide trough = 8 x 2 m sections (without glide bars)	Part No. 90.30
Guide trough-set of 2 trough side parts, with assembled glide bars:	
16 m Guide trough = 8 x 2 m sections (with glide bars)	Part No. 90.31
Installation sets complete (Guide trough-sets + 1)	
17 Installation sets (with C-profile)	Part No. 90.50. <input type="text"/>450

Part No. Installation set: Steel Guide Trough with C-profile (in dependance of the width)

800

800.20.325.0

	B_{Ri} [mm]	Part No. Installation set
.20	265	90.50.450
.25	315	90.50.500
.30	365	90.50.550
.32	390	90.50.575
.35	415	90.50.600
.40	465	90.50.650
.45	515	90.50.700
.50	565	90.50.750
.55	615	90.50.800
.60	665	90.50.850

840

840.13.325.0

	B_{Ri} [mm]	Part No. Installation set
.13	165	90.50.350
.15	178	90.50.350
.16	190	90.50.375
.17	203	90.50.375
.18	215	90.50.400
.20	228	90.50.400
.21	240	90.50.425
.22	253	90.50.425
.23	265	90.50.450
.25	278	90.50.450
.26	290	90.50.475
.27	303	90.50.475
.28	315	90.50.500
.30	328	90.50.500
.31	340	90.50.525
.32	353	90.50.525
.33	365	90.50.550
.35	378	90.50.550
.36	390	90.50.575
.37	403	90.50.575
.38	415	90.50.600
.40	428	90.50.600
.41	440	90.50.625
.42	453	90.50.625
.43	465	90.50.650
.45	478	90.50.650
.46	490	90.50.675
.47	503	90.50.675
.48	515	90.50.700
.50	528	90.50.700
.51	540	90.50.725
.52	553	90.50.725
.53	565	90.50.750
.55	578	90.50.750
.60	628	90.50.800



Trough (Part No. 90.30 and 90.31) with reinforced mounting angles for extreme applications

! The inner width of the guide through and the length of the C-Profile of the assembly kit can differ according to the bracket you choose. Please call us!